

Learn More About IVANS Exchange



Kathy Hrach, Product Manager
IVANS Insurance Solutions

About IVANS

- IVANS provides the download data exchange between carriers and agencies.
- Our focus is carrier / agency connectivity



Why Agencies Care About Download



- No more manual re-keying of data!
- Data accuracy increases and E&O exposure decreases
- Claims info is easily at hand – from your management system
- Policy documents are delivered and attached – no more hunting for them, scanning them or attaching them manually

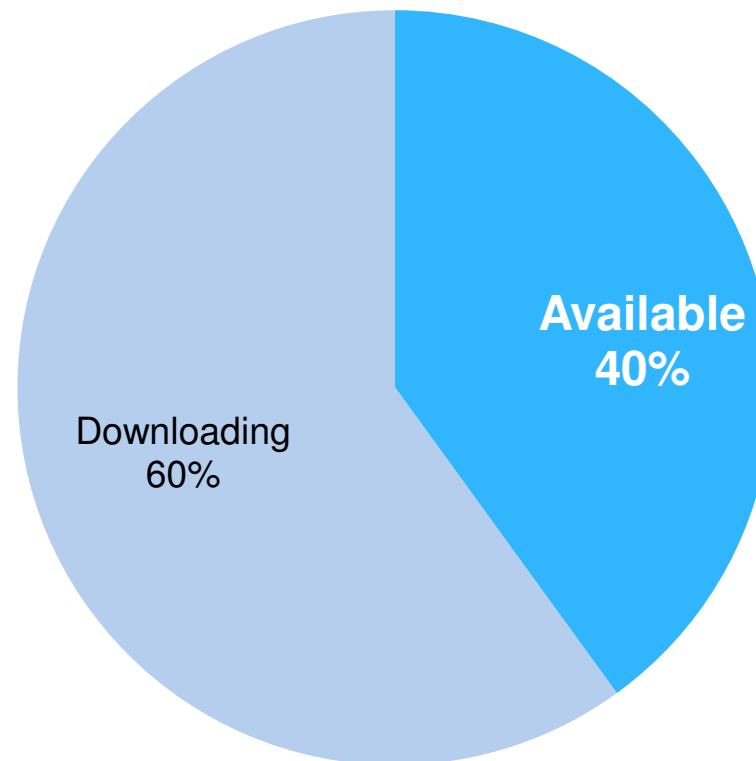
The Time Savings of Download

- According to the Real Time / Download Campaign 2013 Agency & Brokerage Technology Survey



Missed Automation Opportunities

There are nearly 1,000,000 available download connections today.
Of these available connections, 40% are not activated by agencies



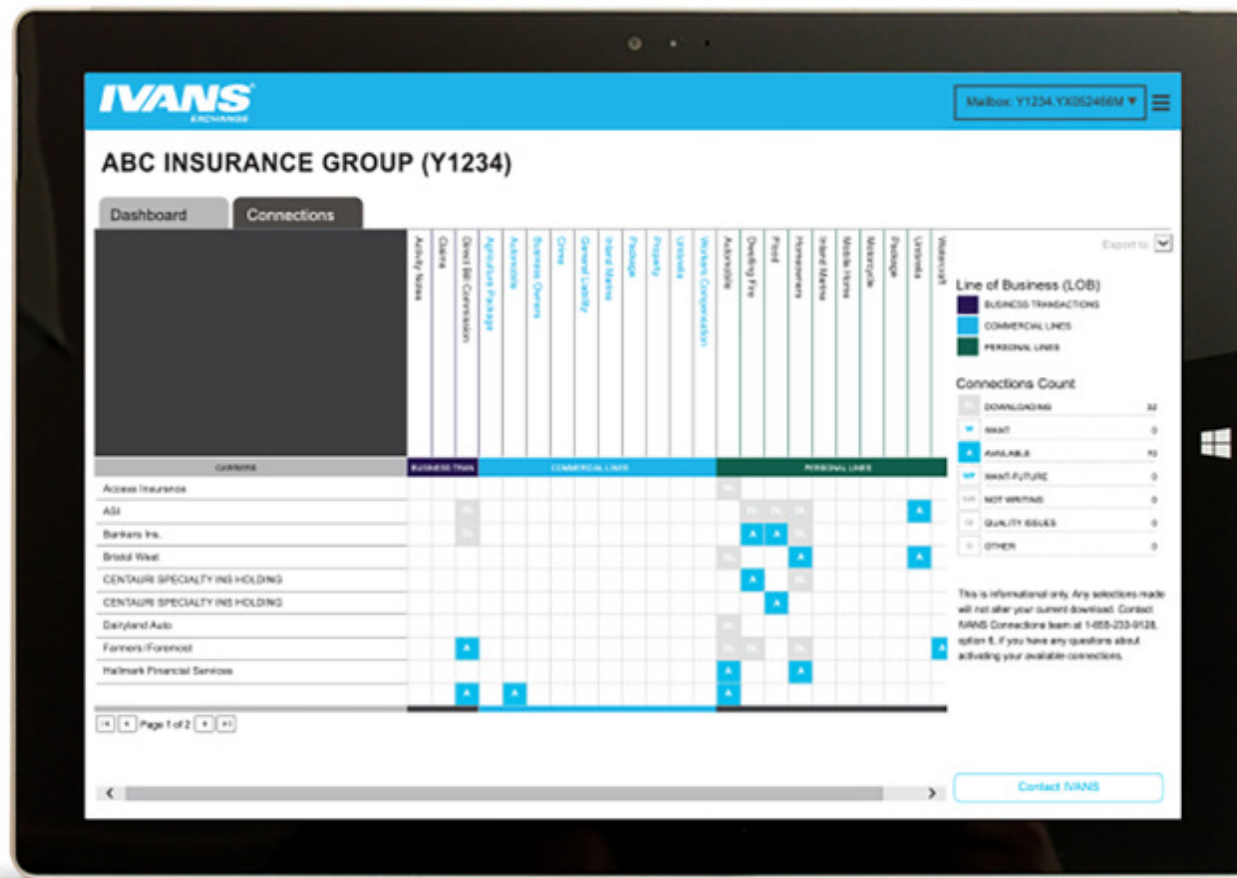
IVANS Connections Reports



- Since Fall 2013, IVANS has been providing Connections Reports to agencies

Company Name	Activity Notes	Claims	Direct Bill Comm	Business Owners	Comm Package	Liability CL	Property CL	Auto CL	Umbrella CL	Worker's Comp	Inland Marine CL	Crime	Package PL	Auto PL	Motorcycle	Homeowners	Dwelling Fire	Inland Marine PL	Boat	Flood	Umbrella PL	Mobile Home
Carrier 1	DL	DL	DL	DL	DL	DL	DL	A	DL	DL	DL	DL	DL	DL	DL	DL	DL	DL	DL	DL	DL	DL
Carrier 2	DL	DL	A	A	A					A	DL	DL		DL	DL		DL			DL		
Carrier 3	A	A	A	DL	DL	DL	DL	DL	DL	DL	DL	DL	DL	DL	DL	DL	DL	DL	DL	DL	DL	DL
Carrier 4	A	A	A				A				DL	DL		DL	DL		A			DL		
Carrier 5	A	A	A				A				DL	DL		DL	DL		DL			DL		
Carrier 6	A	DL	A	DL	DL	A	A	A	A	A	DL	DL	A	DL	DL	A	A	A	A	DL	A	A
Carrier 7	DL	A	DL				A	A			DL	DL		DL	DL		A			DL		
Carrier 8	A	A	DL								DL	DL		DL	A		A			A		
Carrier 9	A	DL	A	DL	DL	DL	DL	DL		DL	DL	DL	DL	DL	DL	DL		DL	DL	DL		DL
Carrier 10	DL	A	DL	DL	DL	A	A	A	A	DL	DL	DL	A	DL	DL	A	DL	A	A	DL	A	A
Carrier 11	A	A	DL	DL	DL	DL	DL	DL		DL		DL	DL	DL	DL	DL	DL	DL	DL	DL		DL
Carrier 12	A	A	DL	DL	DL	DL	A	A	A	DL	DL	A	DL	A	A	DL	A	DL	DL	DL	A	DL
Carrier 13	DL	A	A	A	A			A		A	DL	DL		DL	DL		A			DL		
Carrier 14	DL	A	DL	A	A	A		A	A	A	DL	DL	A	DL	DL	A		A	A	DL	A	A
Carrier 15	A	A	DL	DL	DL				A	DL	DL	DL		DL	DL		A			DL	A	

IVANS Exchange Dashboards

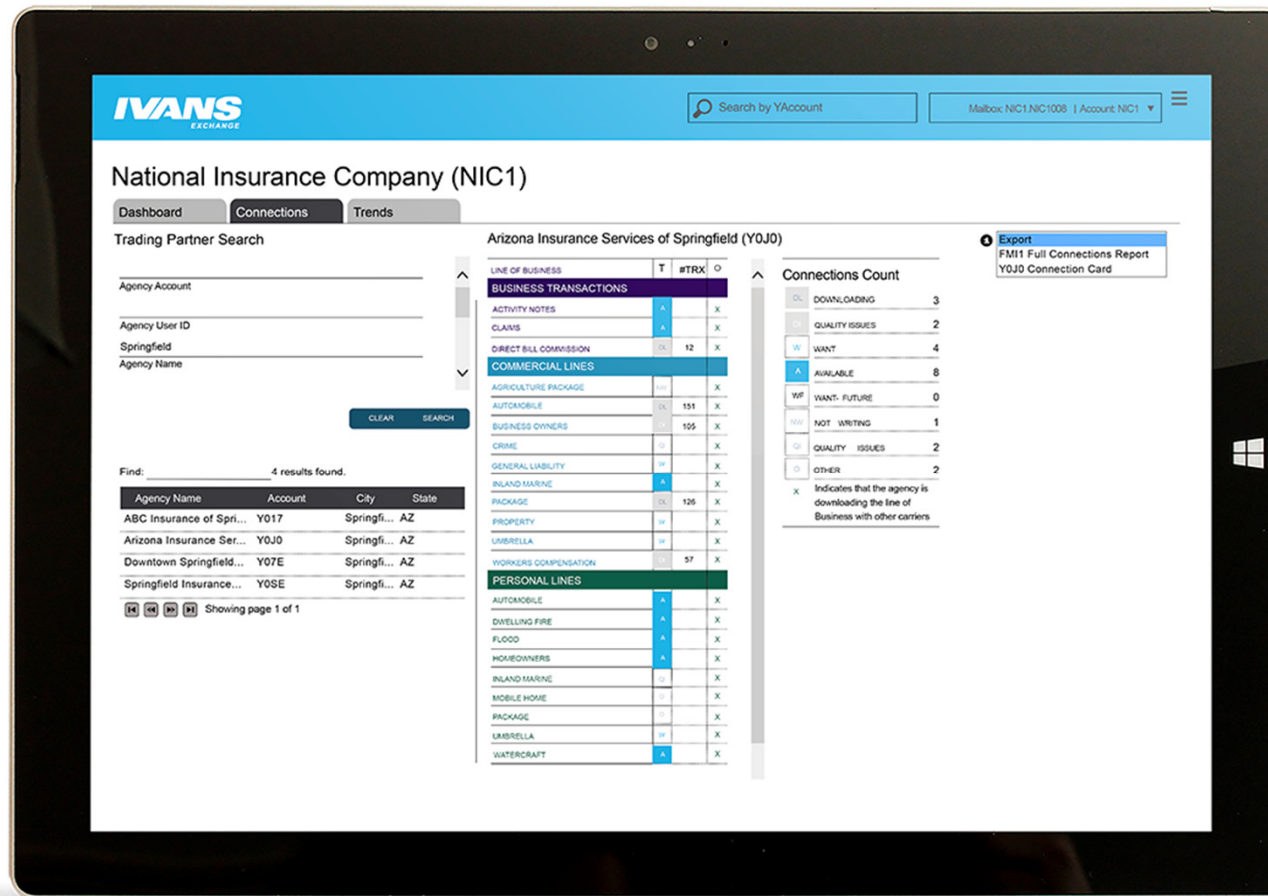


June 2015, IVANS released new Agency Dashboards and on-demand Connections Reports via IVANS Exchange.

Introducing the New IVANS Exchange Agency Dashboards



Carriers Can Now See Your Feedback!



November 2015 IVANS released new Carrier Dashboards providing carriers with visibility to your IVANS Exchange feedback.

Call to Action!



Visit the IVANS Exchange Landing Page to Learn More



-
- <http://ivansinsurance.com/ivans-exchange>
 - Watch video tutorials :
 - > How to Login/Register
 - > Dashboard Overview
 - > Connections Report
 - > Administrator Instructions

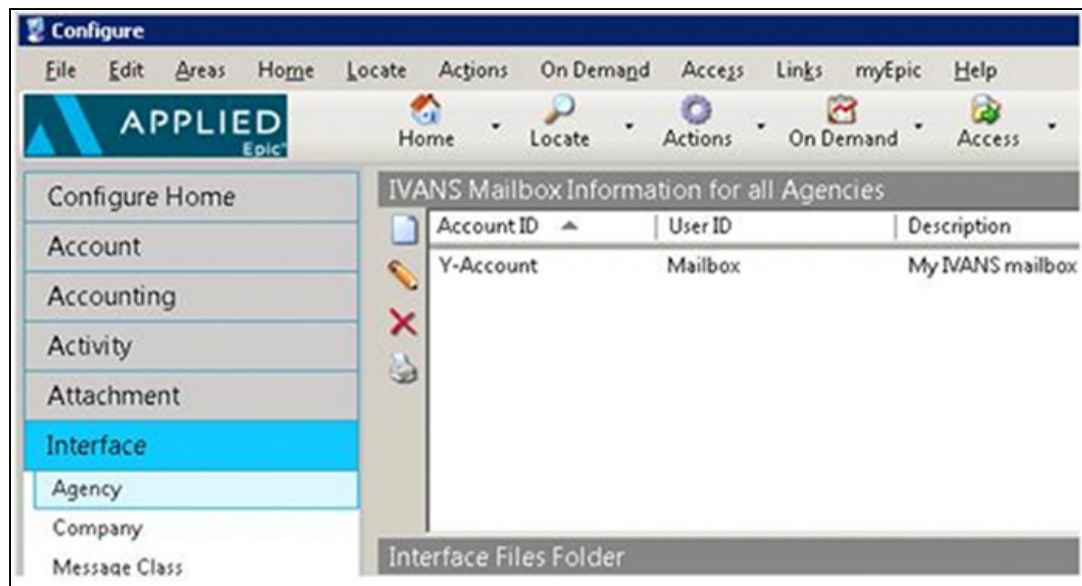
Register for IVANS Exchange



- <https://exchange.ivansinsurance.com>
- To log-in to IVANS Exchange, you will need your IVANS Exchange (ICE) credentials:
 - > Y Account
 - > Mailbox
 - > Mailbox password
- Don't worry – this info is easy to find in both Applied Epic and Applied TAM!

Access Your IVANS Credentials in Applied Epic

- You can easily find your mailbox information in Applied Epic by going to the *Configure -> Interface -> Agency* screen.



- Because Applied Epic hides your password, simply enter your User ID in both the mailbox and password field in the IVANS Exchange registration page.

Access Your IVANS Credentials in Applied TAM



- With rights to *Utility Manager's Company Interface* section, you can easily identify this information in Applied TAM.
- Open *Utility Manager -> Company Interface -> Agency File Interface Setup* screen
- Your agency's mailbox information will be located at the top of the screen.

A screenshot of the "Agency File Interface Setup" screen. The title bar is dark blue with the text "Agency File Interface Setup" in white. Below the title bar, there is a tab labeled "Batch Interface". The main content area is light gray and contains the text "IVANS Information for All Agencies and Branches". Below this text, there are four input fields arranged in two rows. The first row has "Account ID" followed by a text box containing "Y-ACCOUNT" and "Password" followed by an empty text box. The second row has "User ID" followed by a text box containing "MAILBOX" and "New Password" followed by an empty text box.

Can't Access Your IVANS Exchange Credentials?



- Visit <http://ivansinsurance.com/access-ivans-exchange/>, submit your request for access, and IVANS will assist.

Access IVANS Exchange

IVANS Exchange is a new online tool for independent insurance agencies to quickly view and manage their carrier download connections on demand.

Complete the form below to request credentials to access IVANS Exchange.

*First Name:

*Last Name:

*Email Address:

*Agency Name:

*Agency Address:

*Agency City:

*Agency State:

*Agency Postal Code:

*Agency Management System:

*State one carrier you download with through IVANS:

SEND NOW

Questions?